

# Thick Film Analysis



## MCS Perfect Edge™ Micro-Section

### What is MCS Perfect Edge™?

- ✓ Perfect Edge™ is an MCS sample preparation system which uses an ion plasma to cut micro-sections

### What are the benefits of Perfect Edge™?

- ✓ Reveal *true* micro-structure
- ✓ Zero deformation / smear
- ✓ Used for hard & soft materials
- ✓ Prepare large samples (mm's rather than  $\mu\text{m}$ 's)

### Some applications include...

- ✓ Materials development
- ✓ Process development
- ✓ Bonding Trials
- ✓ Reliability testing...

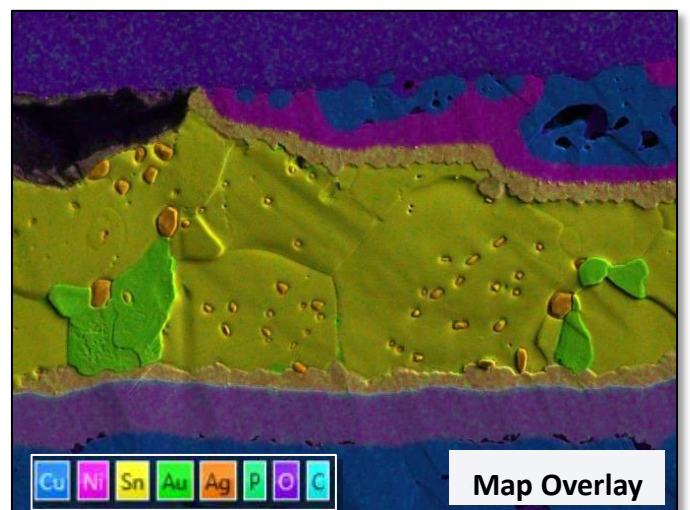
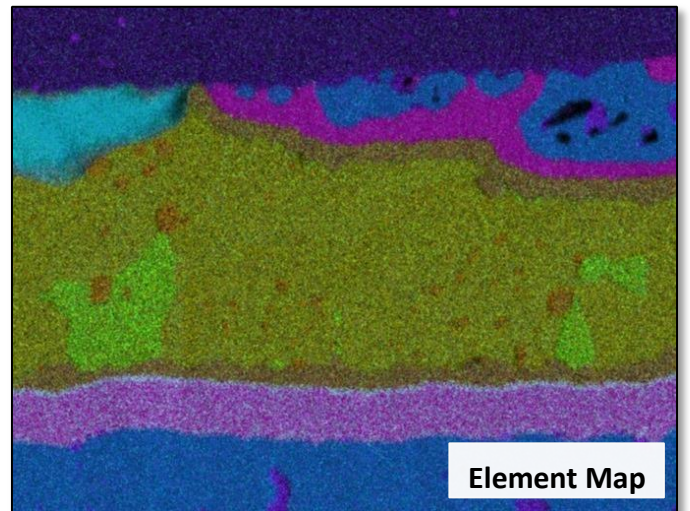
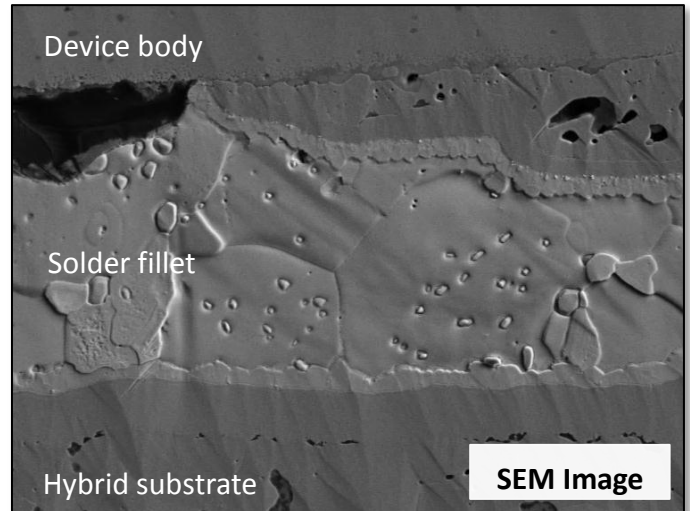
### MCS Ltd

Centre House  
Midlothian Innovation Centre  
Roslin  
Midlothian  
EH25 9RE  
United Kingdom

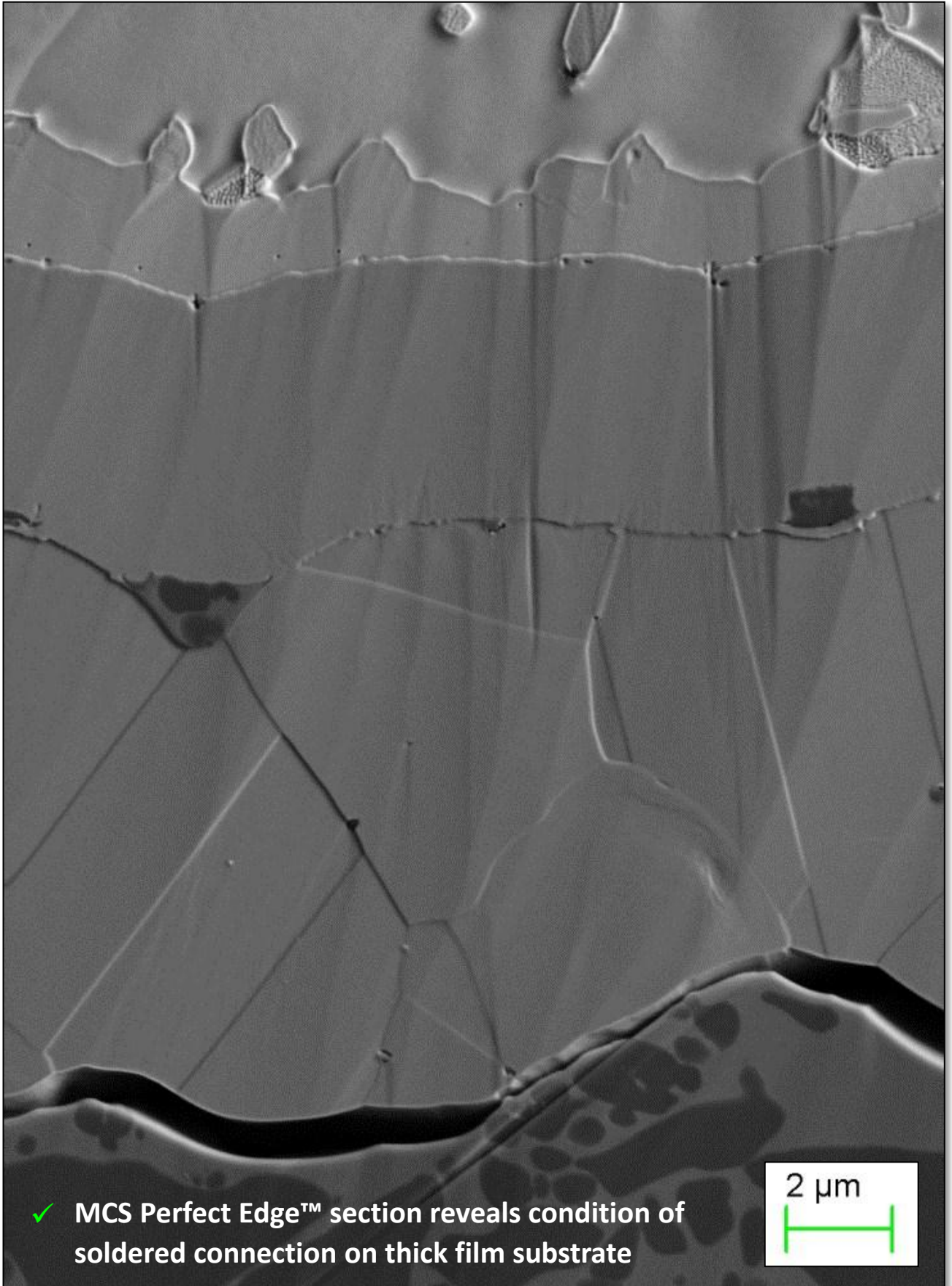
**Phone:** +44(0)131 440 9090

**Email:** [info@materials-consult.co.uk](mailto:info@materials-consult.co.uk)

**Web:** [www.themcsgroup.co.uk](http://www.themcsgroup.co.uk)



# Thick Film Analysis



✓ MCS Perfect Edge™ section reveals condition of soldered connection on thick film substrate

